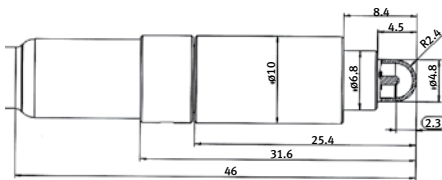
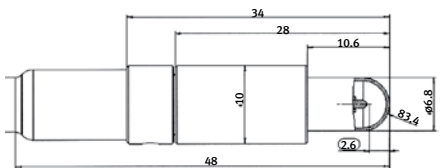


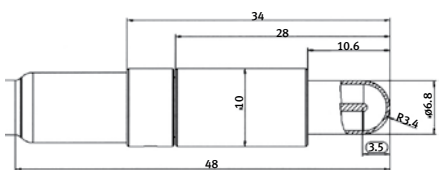
Model CC01 Designed for measurements of small fields with high dose gradients, such as stereotactic fields.
Volume: 0.01 cc
Sensitivity: 0.0033 nC/cGy
Active length: 3.6 mm
Inner diameter: 2.0 mm
Wall: C552, 0.5 mm thick, 88 mg/cm²
Electrode: steel, 0.35 mm diameter



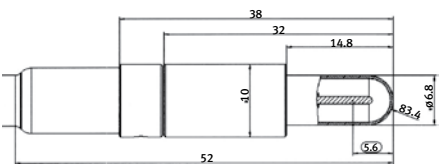
Model CC04 (formerly IC-04)
Volume: 0.04 cc
Sensitivity: 0.013 nC/cGy
Active length: 3.6 mm
Inner diameter: 4.0 mm
Wall: C552, 0.4 mm thick, 70 mg/cm²
Electrode: C552, 1 mm diameter



Model CC08 (formerly IC-06, IC-05)
Volume: 0.08 cc
Sensitivity: 0.027 nC/cGy
Active length: 4.0 mm
Inner diameter: 6.0 mm
Wall: C552, 0.4 mm thick, 70 mg/cm²
Electrode: C552, 1 mm diameter



Model CC13 (formerly IC-15, IC-10)
Volume: 0.13 cc
Sensitivity: 0.044 nC/cGy
Active length: 5.8 mm
Inner diameter: 6.0 mm
Wall: C552, 0.4 mm thick, 70 mg/cm²
Electrode: C552, 1 mm diameter



Model CC25 (formerly IC-25)
Volume: 0.25 cc
Sensitivity: 0.083 nC/cGy
Active length: 10.0 mm
Inner diameter: 6.0 mm
Wall: C552, 0.4 mm thick, 70 mg/cm²
Electrode: C552, 1 mm diameter



Wellhöfer Compact Ionization Chambers

Wellhöfer compact ionization chambers are designed for scanning applications in computerized water phantom systems. They feature high spatial resolution and a Shonka air-equivalent C552 thimble & electrode. Venting is accomplished through the waterproofing sheath and the chamber connector.

Although these ion chambers can be safely inserted and used in water, it is a matter of good practice to limit the immersion time to the actual duration of measurements. The chambers should be removed from water, dried and stored shortly after completion of the scanning studies.

Accessories

- 3BM-F10 Triax extension cable, BNC triax male/female connectors, 10 meters long
- 3RBM-F10 Triax extension cable, BNC triax male/female connectors 10 meters long, mounted in a reel

Features:

- ▶ Waterproof
- ▶ Vented to the atmosphere
- ▶ Fully guarded
- ▶ Air equivalent
- ▶ High spatial resolution